

Westside Healthy Start Breastfeeding Support Model

Engaging Patients to Initiate Breastfeeding

About ACCESS

Our Mission

The mission of ACCESS is to provide outstanding preventive and primary health care, accessible to all in their own communities.

Our Vision

ACCESS is the health care home of choice for individuals, families and communities, exceeding quality standards, and engaging patients and staff in addressing health disparities.

About ACCESS

- 36 health centers across Cook and DuPage counties
- More than 180,000 patients served annually
- ACCESS' patient demographics:
 - **40%** are children age 17 and under
 - **51%** are Hispanic
 - **29%** are African-American
 - **74%** live at or below 200 percent of Federal Poverty Level (\$22,980 annually) – common measure of economic stability

What are FQHCs?

- Federally qualified health centers (FQHCs) include all organizations receiving grants under Section 330 of the Public Health Service Act (PHS).
- FQHCs qualify for enhanced reimbursements from Medicare and Medicaid, as well as other benefits.
- FQHCs must serve an underserved area or population, offer a sliding fee scale program, provide comprehensive services, have an ongoing quality assurance program and a governing board of directors.

About Westside Healthy Start

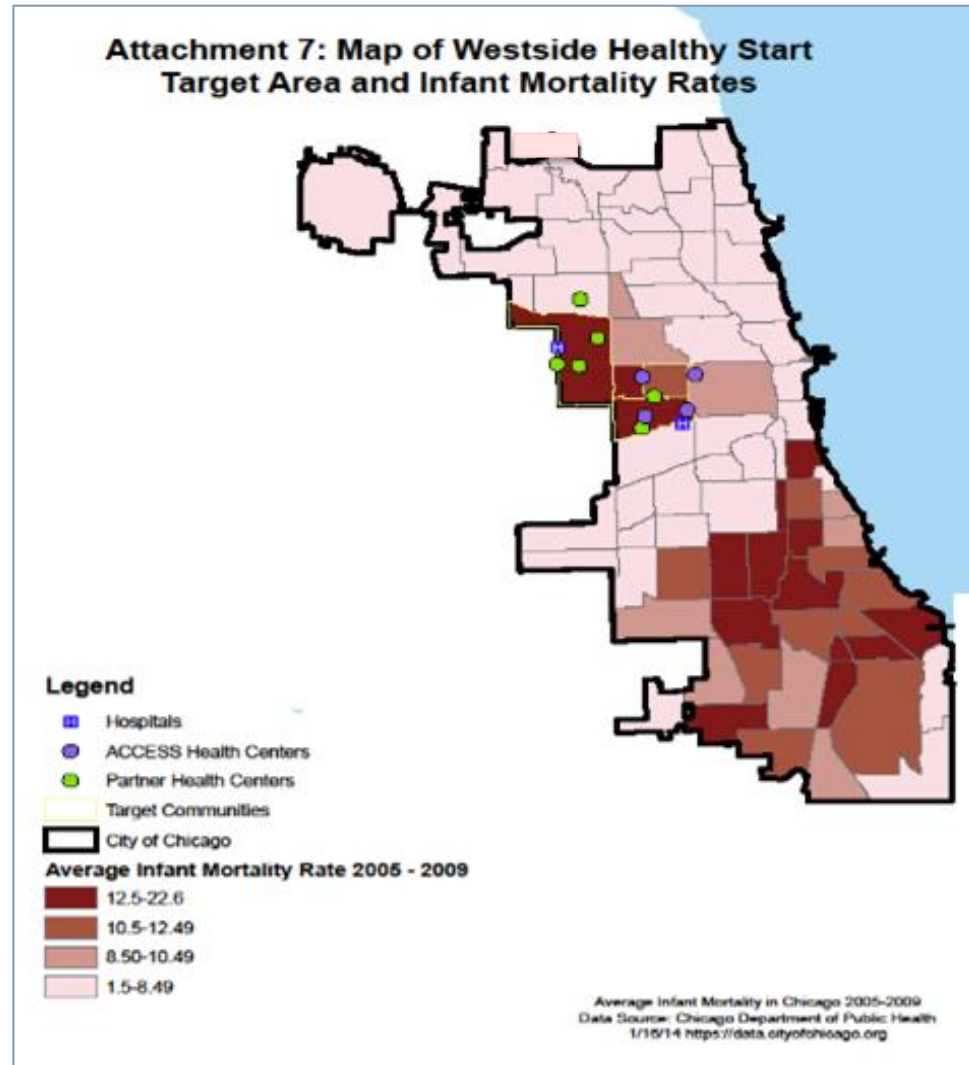
- Westside Healthy Start (WHS) is a national Healthy Start leader with an established model for integrating medical care, social supports, and community action to improve birth outcomes and reduce infant mortality on Chicago's West Side.
- The area has a legacy of poverty that has perpetuated health disparities with an infant mortality rate more than double the national rate.
- WHS is comprised of three FQHCs: ACCESS, Lawndale Christian Health Center and PCC Community Wellness Center
 - Serves 800 low income, predominantly African-American patients annually
- WHS has a 17-year history of collaborating with safety net hospitals and other community service providers



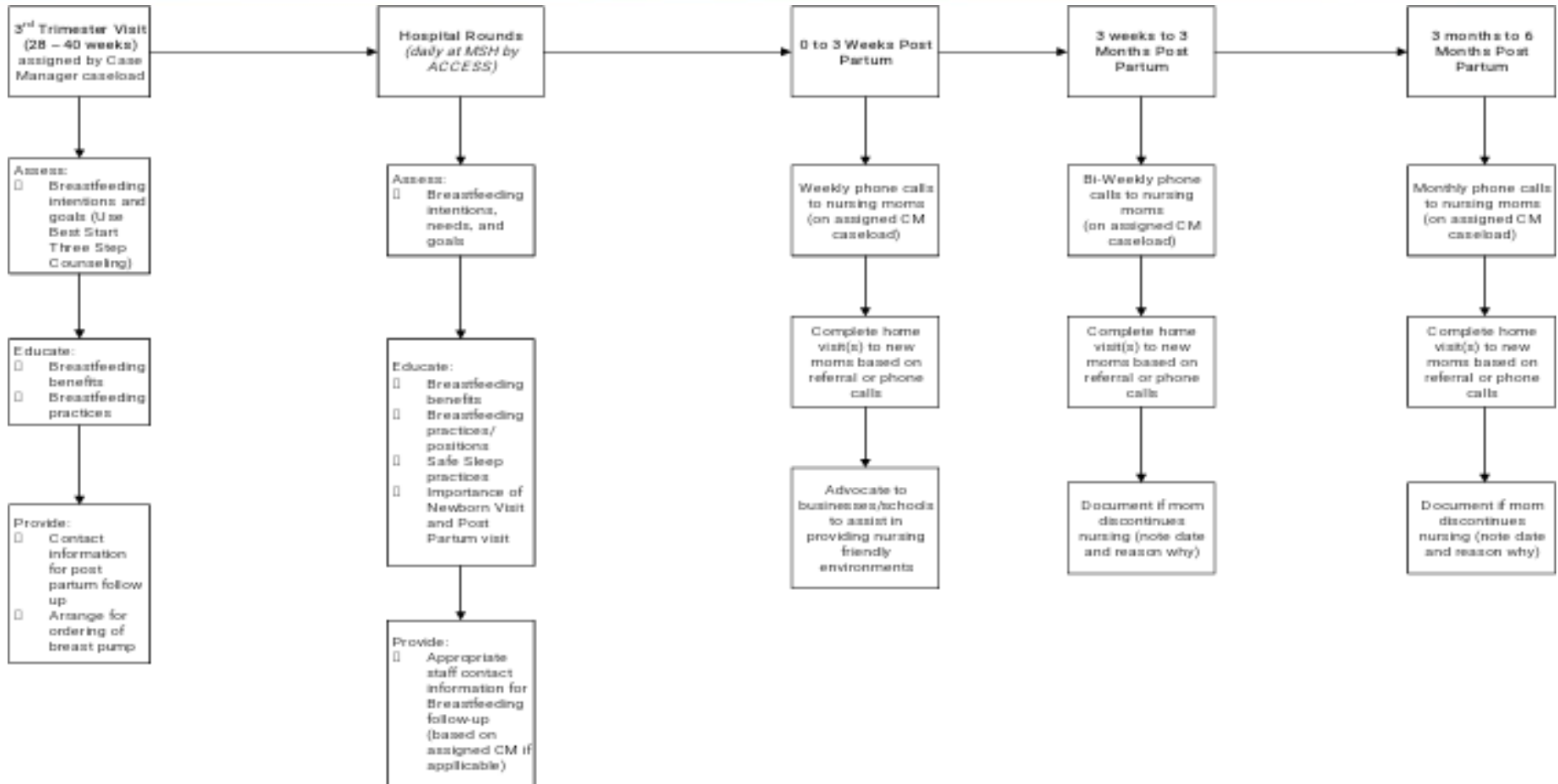
WHS Partnership Model

ACCESS is the lead agency with two additional FQHC partners on Chicago's West Side:

- Lawndale Christian Health Center
- PCC Community Wellness Center



WHS Breastfeeding Counselor Workflow



WHS Breastfeeding Support Model

An ***evidence-informed*** breastfeeding initiation and duration approach including:

- Prenatal education and Best Start Three Step Counseling
- Hospital partnership to implement Baby-Friendly Hospital Initiative
- Weekday hospital rounds to provide lactation support at time of delivery
- Routine contact to six months postpartum

Using Best Start Three Step Counseling

Step 1. Ask an open-ended question

Step 2. Affirm her concerns

Step 3. Provide targeted education directed to her specific concerns

Hospital Breastfeeding Rounds

Breastfeeding Counselors:

- Complete rounds to all women on the Mother Baby unit, whether breastfeeding or not, to provide education
- Encourage mom to attempt initiation
- Assist mom if she is having trouble with latching or positioning, and will model and coach mom until it is corrected
- “Case conference” with hospital staff (IBCLC, nurse, and or provider) to best support mom

BFC Hospital Round

ACCESS BFCs – Enter hospital round information for all WHS participants rounded on after delivery. Do not document round encounters for participants who are still pregnant (ex. admitted for preterm labor but not delivered).

Breastfeeding counselor _____

Round date _____

Mother’s name _____

Delivery date _____

Is infant alive and in mother’s care (not in NICU, DCFS)? Yes No

If infant is not alive or in mother’s care, no additional documentation is required. If infant is alive and in mother’s care, additional documentation is below.

Standard education provided on the following topics:
Check all that apply.

Breastfeeding benefits
 Positioning practices
 Safe sleep practices
 Importance of newborn postpartum visit

Referrals provided:

Breast pump
 WIC
 Behavioral health
 Male involvement
 Other: _____

Postpartum visit scheduled? Yes No Unknown

One week well-child visit at health center scheduled? Yes No Unknown

How are you feeding your baby?

Breastfeeding only
 Bottle with formula only
 Both breastfeeding and formula
 Unknown

If any breastfeeding, how long do you plan to breastfeed your baby?
Do not read answer choices to patient.

2-4 weeks
 1-3 months
 4-6 months
 7-9 months
 10-12 months
 Over 1 year

If bottle with formula only, are you interested in breastfeeding? Yes No Unknown

Thank You and Contact Information

Sandra P. Morales, CLC

Breastfeeding Support Counselor

Access Community Health Network

2409 W. Warren Blvd., 2nd Floor

Chicago, IL 60612

312.733.8906

Sandra.Morales@accesscommunityhealth.net

Dara M. Gray, M.A., LCSW

MCH Program Manager

Access Community Health Network

2409 W. Warren Blvd., 2nd Floor

Chicago, IL 60612

312.733.0130

Dara.Gray@accesscommunityhealth.net

**Timika Anderson Reeves M.S.W., PHD
Candidate '18**

**MCH Program Manager, Partnership &
Outreach**

Access Community Health Network

Warren Family Health Center

2409 West Warren Blvd.

Chicago, IL 60612

312.733.0065

Timika.Anderson@accesscommunityhealth.net